

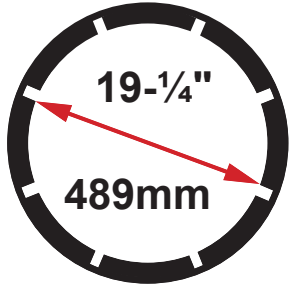
CC1200 Production / Industrial Hose Crimper



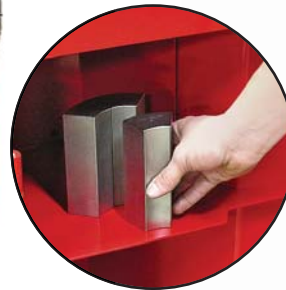
The CC1200 Series hose crimper with the Patented ACT™ Controller and 485 tons of crimping force has the capability to crimp from 4" through 12" industrial hose.

UNIQUE USER FRIENDLY PATENTED ACT™ CONTROLLER

- Fully adjustable crimp to diameter.
- Production capabilities.
- Pressure Compensation uses pressure to eliminate "trial and error".
- Memory capacity for accurate repeatability.
- Automatically converts inch to mm and mm to inch so that no calculation is ever required.



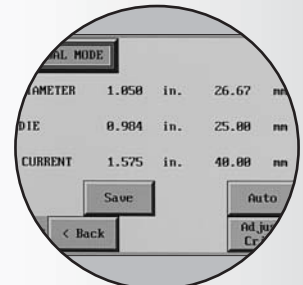
Max Head Opening W/O Dies: Can accommodate 12" 150 lbs SAE flange.



Storage Cabinet: For dies and tooling.



Patented ACT™ Controller: Offers 4 language settings to choose from English, Espanol, Deutsch and Francais.



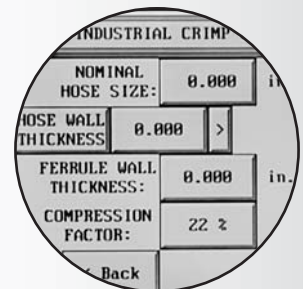
Features Of Operator Interface: User friendly navigation, Manual Mode, Semi Auto Mode, Full Auto Mode and Production Features.

ENGINEERED TO ACCOMMODATE YOUR NEEDS

- Hose capacity from 4" through 12" industrial.
- Large opening allows special and angled fittings to be handled easily.
- Modern Patented ACT™ Controller with large touch screen and user friendly navigation.
- Mirror helps the operator to position the hose where it needs to be and make a precise crimp.
- Foot Switch for use in Semi and Full Automatic Mode, keeping both hands free.
- Easy grease maintenance through the 10 grease fittings.

DURABLE, RELIABLE DESIGN = PROFITABILITY

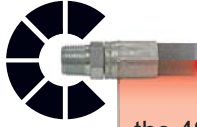
- 485 Tons of crimping force.
- 7.5 HP motor with dual stage pump (5 HP motor optional).
- Complete range of dies and accessories available.



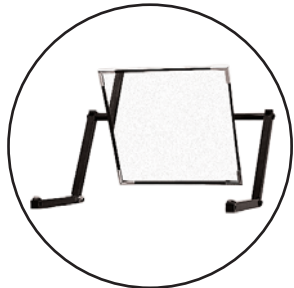
Industrial Crimp Calculator: Takes guesswork out of industrial crimping.

Products covered by all or some of these Patents:
US 7,383,709; US 8,230,714; EP 1,909,987 and Patents Pending.

CC1200 Production / Industrial Hose Crimper



With the CC1200, 12" industrial hose crimping comes at an affordable price. The 19-1/4" (489mm) die opening, the 485 ton cylinder and the industrial hose calculator make industrial hose crimping fast, accurate and profitable.



Mirror (Included)
P/N:103471



CC-Foot Switch (Included)
P/N:CC-FOOTSWITCH



Adapter Die Sets: 275mm to 160mm P/N:104480 and 381mm to 275mm P/N:104479 (Included)



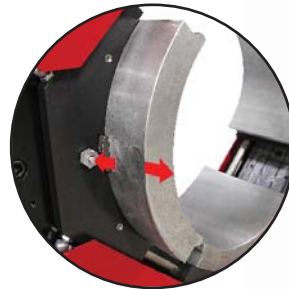
(2) Industrial Die Shelves (Included) P/N:103572



Mini Grease Gun with grease tube (Included)
P/N:103889



Available CRIMPX Die Lubricant Grease 3 oz mini grease tube
P/N:103887



Quick Release Push Button:
Unique 4 finger die system features a quick release die button.



Easily Accessible For Maintenance:
The 7.5 HP motor with dual stage pump and electronics are housed in a separate cabinet

HOSE CHART				
Industrial Hose Ø	Die Size (mm)	Die Length (Std)	Die Length (in)	Die Series
4"	108	130	5.118	160S
	116	130	5.118	160S
	126	130	5.118	160S
5"	135	130	5.118	160S
	146	130	5.118	160S
6"	166	159	6.250	275S
	178	159	6.250	275S
8"	215	159	6.250	275S
	230	159	6.250	275S
	245	159	6.250	275S
10"	281	205	6.250	381S
	305	205	6.250	381S
12"	320	205	6.250	381S
	340	205	6.250	381S

Dies available in 159, 175, and 205 mm lengths

Technical Data
485 Ton
Industrial: From 4" up to 12"
Crimper Size: L: 54" x W: 62" x H: 86"
Power Unit Size: L: 28" x W: 33-1/2" x H: 45"
Weight: 6,185 lbs
Power: 7.5HP/230V/3Phase (Standard) 7.5HP/440-480V/3Phase (Optional) 5HP/230V/1Phase (Optional)
Adjustability: Inch / Metric
Die series: 160S / 275S / 381S
Opening w/o dies: 489mm / 19.25"
Master die inside diameter: 381mm / 15"
Master die travel: 152mm / 6"
Reservoir capacity: 45 US Gallons
Oil type: ISO 46 Hydraulic Oil



See the complete line of CustomCrimp® Crimpers and Accessories at:

CustomCrimp®

www.customcrimp.com

(219) 462-6128