

ELECTRONIC "PLC" SERIES Test Benches



Whether you are producing a single assembly or a production run, CustomCrimp® has the test equipment to give both you and your customer the assurance that the product has been assembled correctly. A programmable PLC Controller gives the operator the ability to pre-program and repeat a test sequence and print the results on the attached tape (optional save to USB).

CUSTOMIZED AND SPECIAL DESIGN BENCHES

In addition to the standard Electronic "PLC" series test benches: BE1500PLC, BE2500PLC, BE3500PLC and BE4000PLC special purpose test benches can be designed by our engineering department, as well as an extension trough can be designed to meet specific requirements.



Intuitive Screens: Lead the operator through the set up and monitoring of the test procedure.



Large capacity cabinet to make large hose loading easy



Removable Side Panel



Available Extension Trough



Available 90 PSI Booster Pump

ENGINEERED TO ACCOMMODATE YOUR NEEDS

- Automatic pressure cut off when door is opened.
- Test area is at a convenient working height.
- Full front opening allows hose to be loaded on a skid.
- 6" Touch screen and user friendly navigation.
- Print a detailed report of the tested assembly.
- Built-in USB port to download log files and save into a USB flash drive.
- 6 Port multiple outlet manifold.
- Available extension trough in 10 foot sections.
- Removable side panel permits the testing of longer hose assemblies or the attachment of an optional trough.
- Available 90 psi booster pump for faster filling of hose.

DURABLE, RELIABLE DESIGN = PROFITABILITY

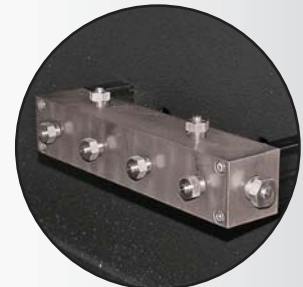
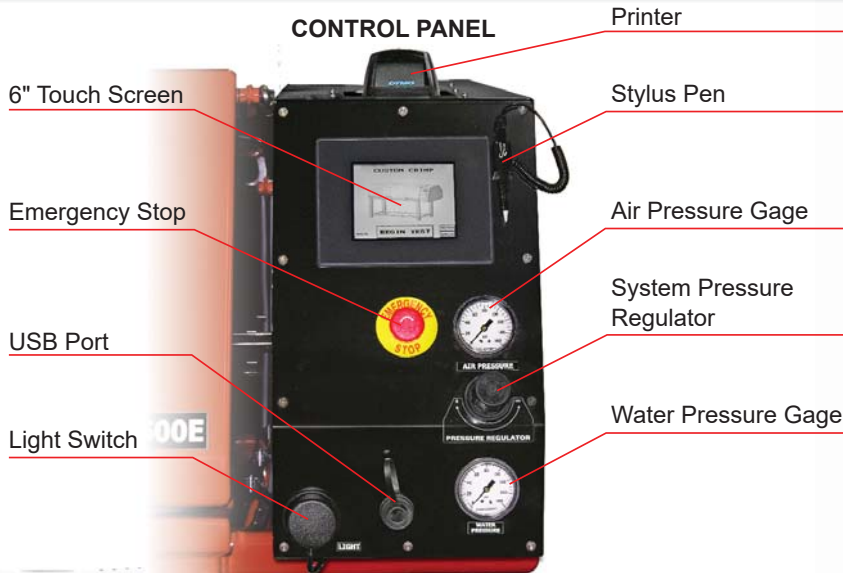
- Powder coat finish for durability.
- 1/2" Polycarbonate safety window.
- Interior coated with polyurethane bed liner material.
- Built in work light for good visibility during testing.

ELECTRONIC "PLC" SERIES Test Benches



The electronic test benches include the most user friendly controller that guides you through the easy set up whether you want to do one or multiple cycles of the same assembly. Print out includes: company name, date and time of the test, job number, number of cycles and maximum pressure. All this information can also be downloaded to a computer or flash drive via USB.

CONTROL PANEL



TECHNICAL SPECS	BE1500PLC	BE2500PLC	BE3500PLC	BE4000PLC
Inside cabinet dimensions	L: 67" x W: 33" x H: 17"			
Overall dimensions	L: 85" x W: 39" x H: 52"			
Weight	955 lbs			
Maximum pressure	21,750 PSI	36,250 PSI	50,750 PSI	60,000 PSI
Low pressure	5,000 PSI			



See the complete line of CustomCrimp® Crimpers and Accessories at:

CustomCrimp®

www.customcrimp.com

(219) 462-6128