

MANUAL "BE" SERIES Test Benches



The CustomCrimp® Manual "BE" Series Test Benches are designed with features that make proof and burst testing of hydraulic hose assemblies a quick and easy procedure.

CUSTOMIZED AND SPECIAL DESIGN BENCHES

In addition to the standard Manual "BE" series test benches: BE1500, BE2500 and BE3500 special purpose test benches can be designed by our engineering department, as well as an extension trough can be designed to meet specific requirements.



Large capacity cabinet to make large hose loading easy



Removable Side Panel



Available Extension Trough



Available 90 PSI Booster Pump

ENGINEERED TO ACCOMMODATE YOUR NEEDS

- Automatic pressure cut off when door is opened.
- Test area is at a convenient working height.
- Full front opening allows hose to be loaded on a skid.
- 6 Port multiple outlet manifold.
- Available extension trough in 10 foot sections.
- Removable side panel permits the testing of longer hose assemblies or the attachment of an optional trough.
- Available 90 psi booster pump for faster filling of hose.

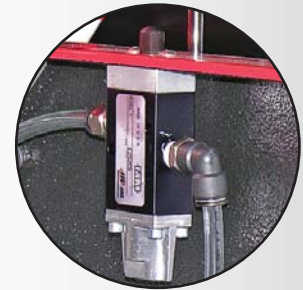
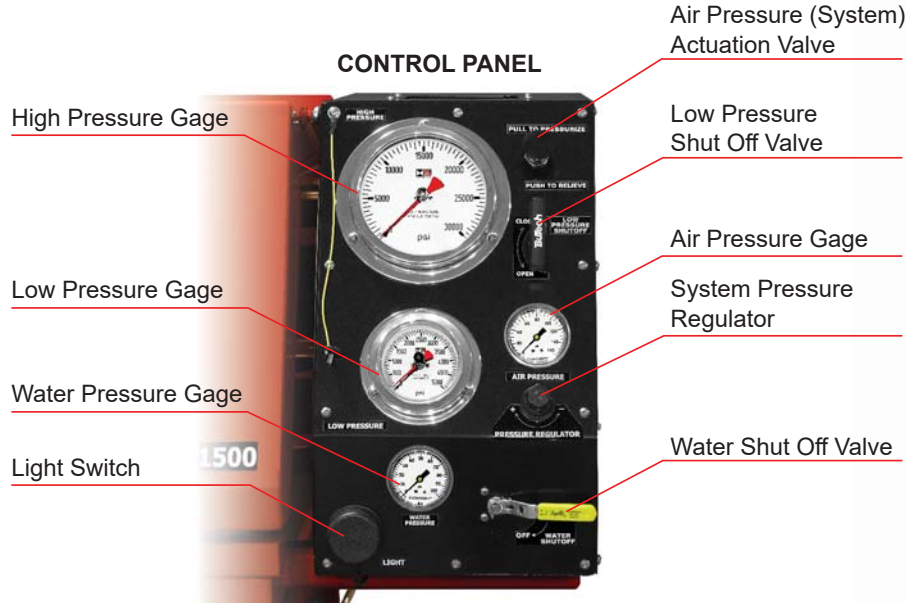
DURABLE, RELIABLE DESIGN = PROFITABILITY

- Powder coat finish for durability.
- 1/2" Polycarbonate safety window.
- Interior coated with polyurethane bed liner material.
- Built in work light for good visibility during testing.

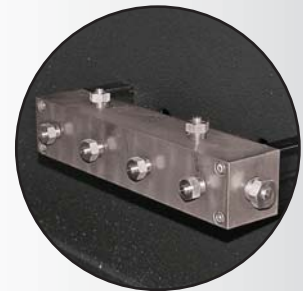
MANUAL "BE" SERIES Test Benches



In today's safety conscious environment, testing is the final critical step in assuring that the product being delivered to your customer will meet all of the hose and fitting manufacturer's specifications.



Safety Switch



Multi-Port Manifold Outlet



Built-In Work Light

TECHNICAL SPECS	BE1500	BE2500	BE3500
Inside cabinet dimensions	L: 67" x W: 33" x H: 17"		
Overall dimensions	L: 85" x W: 39" x H: 52"		
Weight	955 lbs		
Maximum pressure	21,750 PSI	36,250 PSI	50,750 PSI
High pressure gage	30,000 PSI	40,000 PSI	60,000 PSI
Low pressure gage	5,000 PSI		



See the complete line of CustomCrimp® Crimpers and Accessories at:

CustomCrimp®

www.customcrimp.com

(219) 462-6128